

Information for Parents/Guardians

The programme is for children aged 5 to 13 years and caters for up to 30 children a day. The core hours are 9am to 3pm with before care from 8am to 9am & after care from 3pm to 5pm. The programme is CYF & OSCAR approved.

Core Fees (9am to 3pm): \$14 per child per day for on-site days. \$19 per child per day for off-site trips. A \$2 discount off the core daily fee applies for each additional sibling. **Extra Fees:** Before care 8am to 9am: \$3 per child per day. After care 3pm - 5pm: \$5 per child per hour per day. \$2 per minute per child will be charged for child/ren collected after 5pm.

Pre-enrolment & payment is essential to ensure a place for each child and adequate staffing can be planned in advance. An enrolment form **MUST** be completed before acceptance of child/ren can go ahead. **We accept cheques/cash only - sorry eftpos is not available.** (Terms & Conditions of Trade are on the enrolment form).

WINZ Subsidy: Parents wanting to apply for WINZ subsidy **MUST** do so **BEFORE** the programme starts. Failure to do so **WILL** affect eligibility and any fees must be paid by you. Any shortfall of WINZ subsidies must also be paid by you. (Terms & Conditions are on the enrolment form).

Lunches: We provide lunch for on-site days only. Please provide a packed lunch for all excursions. Please provide snacks and a clearly named drink bottle.

Clothing: Please check the clothing requirements for each outing (on whiteboard in SHP room) and provide a sun-hat during summer. We provide sun-block free-of-charge.

Medication/Sick Children: Sick children cannot be admitted to the programme. If a child becomes unwell while in our care, parents will be notified and the child will be kept comfortable until they can be collected. If they require immediate medical attention they will be taken to Pt Chevalier Medical Centre for on-site days and to the nearest medical centre on excursion days. Parents are responsible for any costs involved. If a child needs to take medication while on the programme a consent form is required to be completed and signed - please see the supervisor or co-ordinator.

Expectations: Each individual child **must** be signed in and out each day they attend. It is accepted all children are encouraged to participate in on-site & off-site activities/excursions planned for the day. No child will be allowed to leave the programme without specific written permission of a parent/guardian. Only people stated on the enrolment form will be allowed to collect children.

Ratios: The legal staff minimum ratio is 1:10 onsite, 1:8 off-site with some excursions 1:6 or 1:5 e.g. for water activities. We often have more staff than the legal ratio requires. Every care is taken by us to provide responsible supervision of all children.

General: For more information please phone, fax, email or visit the office. If you have any complaints, in the first instance please approach the Programme Supervisor, or Centre Co-ordinator if preferred. Programme policies are on file for viewing. All information given to us is confidential. We welcome your feedback -if you have any compliments or suggestions to make improvements, please let us know.



Pt Chevalier Community Centre



School Holiday Programme

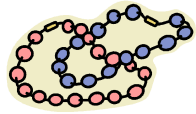
Monday 28th September to
Friday 9th October 2009

Held at: Pt Chevalier Community Centre, 18 Huia Road, Pt Chevalier
Phone: 846-1094 Fax: 846-1031
Email: ptchev.communitycentre@xtra.co.nz
Website: ptchevcommunitycentre.org.nz
Postal: PO Box 44-109, Pt Chevalier, Auckland 1246
Core office hours: 9am to 3pm Monday to Friday

*Pt Chevalier Community Centre Inc. proudly acknowledge
support from:*

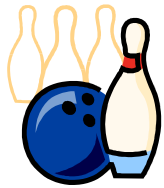
Auckland City Council, Ministry of Social
Development (OSCAR), ASB Trust, Western Bays Community Board, Pt Cheva-
lier Memorial RSA, Bike Barn, The Trusts Charitable Foundation & Green Bay
Fruit & Veges





Monday 28th September - \$14
Beading with Family Jewels

Make a beautiful necklace -
 (Boys, you can make one for your Mum!)



Tuesday 29th September - \$19

**LASER STRIKE &
 TEN PIN BOWLING -**

5yrs play bowling. 6-13yrs play laser &/or
 bowling - 1 game of each or 2 games of one!



Wednesday 30th September - \$14

Cooking day with Kala & Semahar

Help make your own delicious banana ice-cream

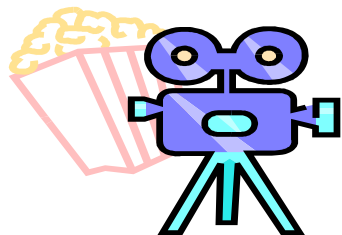


Thursday 1st October \$19
HIGHWIC HOUSE, EPSOM

Celebrate Auckland Heritage Festival with a trip back in time -
 Victorian Fun & Games including House Hunt, Stilts, Croquet, Quoits (Horse Shoe
 game), Skittles, Sack races, Hopscotch, Marbles, Skipping and much more.

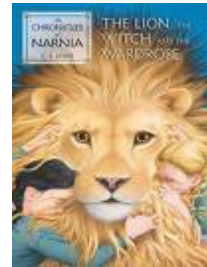
Friday 2nd October - \$19

**Friday Movies
 at St Lukes**



Monday 5th October - \$19

**Learn some cool Dance Grooves
 with Matt ~ He's Back!**



Tuesday 6th October - \$19

**The Lion the Witch and the
 Wardrobe Theatre
 Production**



Wednesday 7th October - \$14

Drama with Angela

Come have fun and
 be part of a stage play.



Thursday 8th October - \$19

**Sheep World &
 Scarecrow Festival 2009
 Warkworth**



Friday 9th October - \$19

**Friday Movies
 at
 St Lukes**

